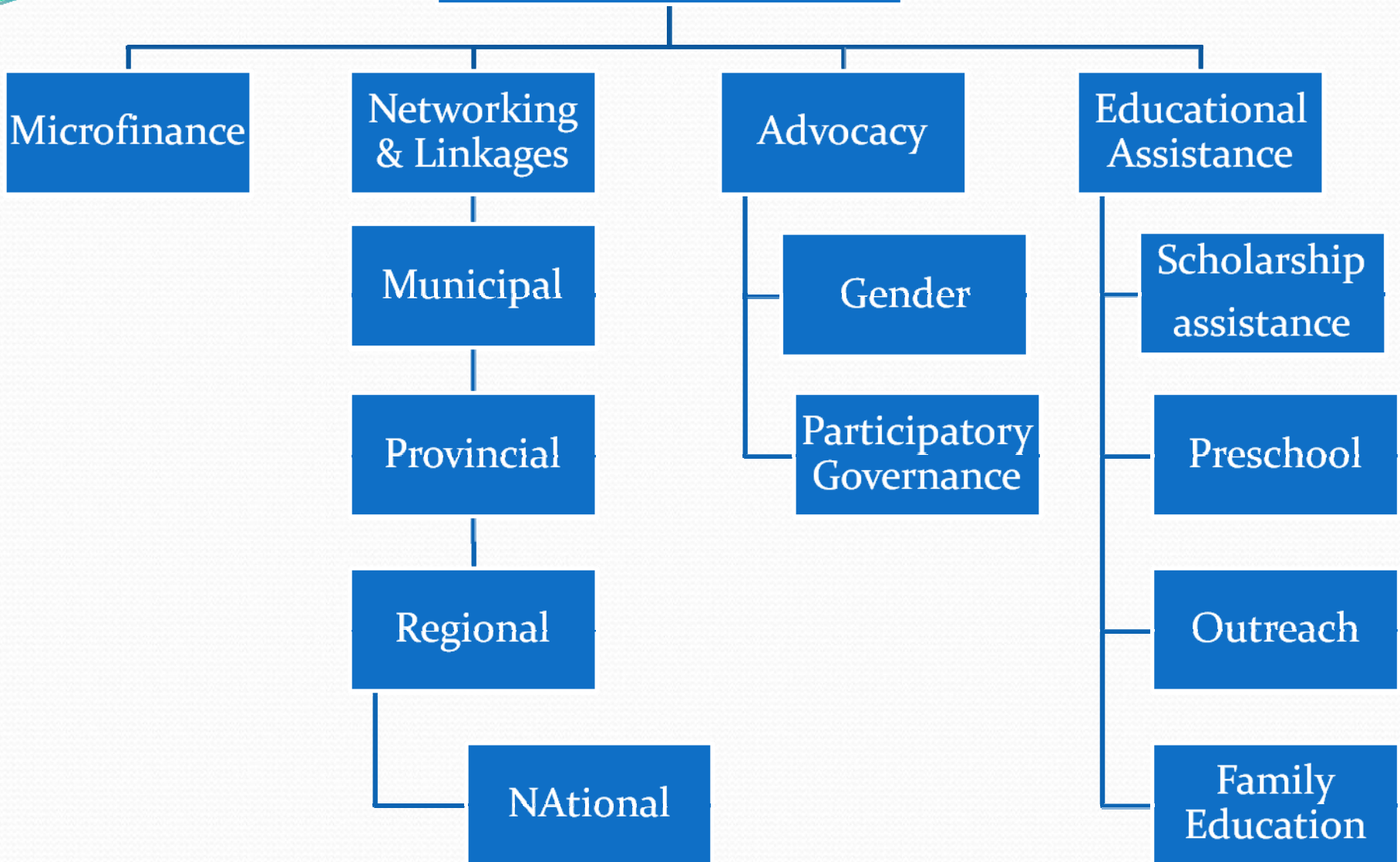


Malayang Lapiang ng mga Kababaihan, Inc (MALAYA KA, INC)

Malaya Ka, Inc.

- Non-government organization
- Non-stock, non-profit
- Operating in the province of Sorsogon
- Members : 25 professional women from various fields
- Main thrust : women empowerment
- Focus –women, youth & children

Malaya Ka, Inc



Monitoring

Check My Schools

- Complete records and data obtained from the schools
- Low NEAT results

Furniture Deliveries

- Post delivery monitoring was made
- With completed delivery, inventory and acceptance forms
- Furniture monitored 3 to 4 weeks after delivery were found to pass the specified measurements but already showing poor quality of materials used

Textbooks and Teacher's Manuals Deliveries

- With completed delivery, inventory and acceptance forms
- Textbooks delivered were of good quality & of specified standards

Bidding Process

- Noted only one major finding
- Members of BAC & secretariat were found to observe proper procedures during bidding due to presence of CSO observers
- Relationship between members of BAC and contractors – very comfortable and cordial

School Building Construction Monitoring

- Initial delay in the implementation due to substandard materials
- Project was later continued with correct adjustments

Results, Comments and Highlights

- Provincial CSO database was updated
- CSOs , DepED and DPWH partnership established
- Members and volunteers from CSOs were trained as procurement and contract implementation monitors
- Recognition of Malaya Ka as the official CSO Observer in the bidding and procurement process of DepED Sorsogon Division
- Information gaps – National to Local
- Engagement with the Government Agency – check and balance
- Malaya Ka - third party monitor of NEA SEP and PAMANA Program

Recommendations

- Institutionalization of an expanded BAC to include CSOs
- Continuing capacity building of CSOs
- Advocate, support and continue local monitoring of government programs
- Strengthen coordination between NGAs and CSOs
- Sustain and improve Monitoring and Evaluation Procedures